

A woman with blonde hair in a ponytail, wearing a blue tank top, is standing in a meeting room. She is pointing at a large whiteboard that displays a list of school names and their corresponding budget amounts. The whiteboard is divided into two columns. The left column lists school names, and the right column lists budget amounts. The woman is looking at the whiteboard with a focused expression. In the background, there is a window with blinds and an American flag.

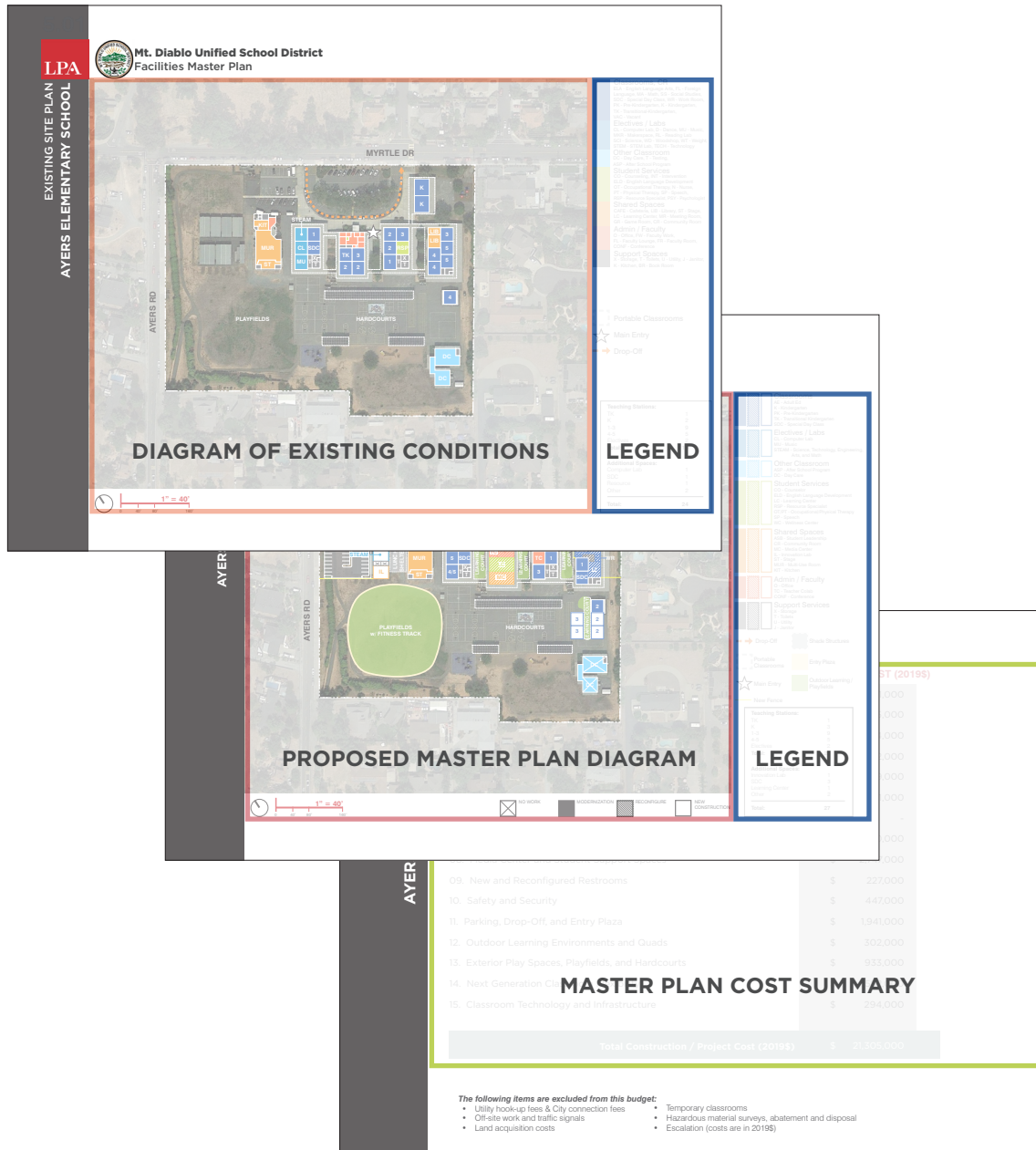
## IMPLEMENTATION / LOMA VISTA ADULT CENTER



### **Mt. Diablo Unified School District Facilities Master Plan**



## Mt. Diablo Unified School District Facilities Master Plan



### Existing Site Plan Diagram

Indicates existing building placement, hardscape and landscaped areas. In addition, the existing site diagram locates relevant program spaces, adjacencies, and current uses.

### Proposed Master Plan Diagram

Includes conceptual building placement and hardscape and landscape reconfiguration, if needed. These diagrams note proposed new construction, reconfiguration of existing spaces, the modernization of existing spaces, and indicates spaces where no work is proposed, where eligible, to the standards outlined in the Facilities Master Plan.

Four degrees of work are identified throughout the proposals:



Indicates a space where no work is proposed, due to age and condition of the facility.



Indicates a space to be modernized or repaired as indicated in the facility assessments



Indicates an area of reconfigured space(s)



Indicates new construction

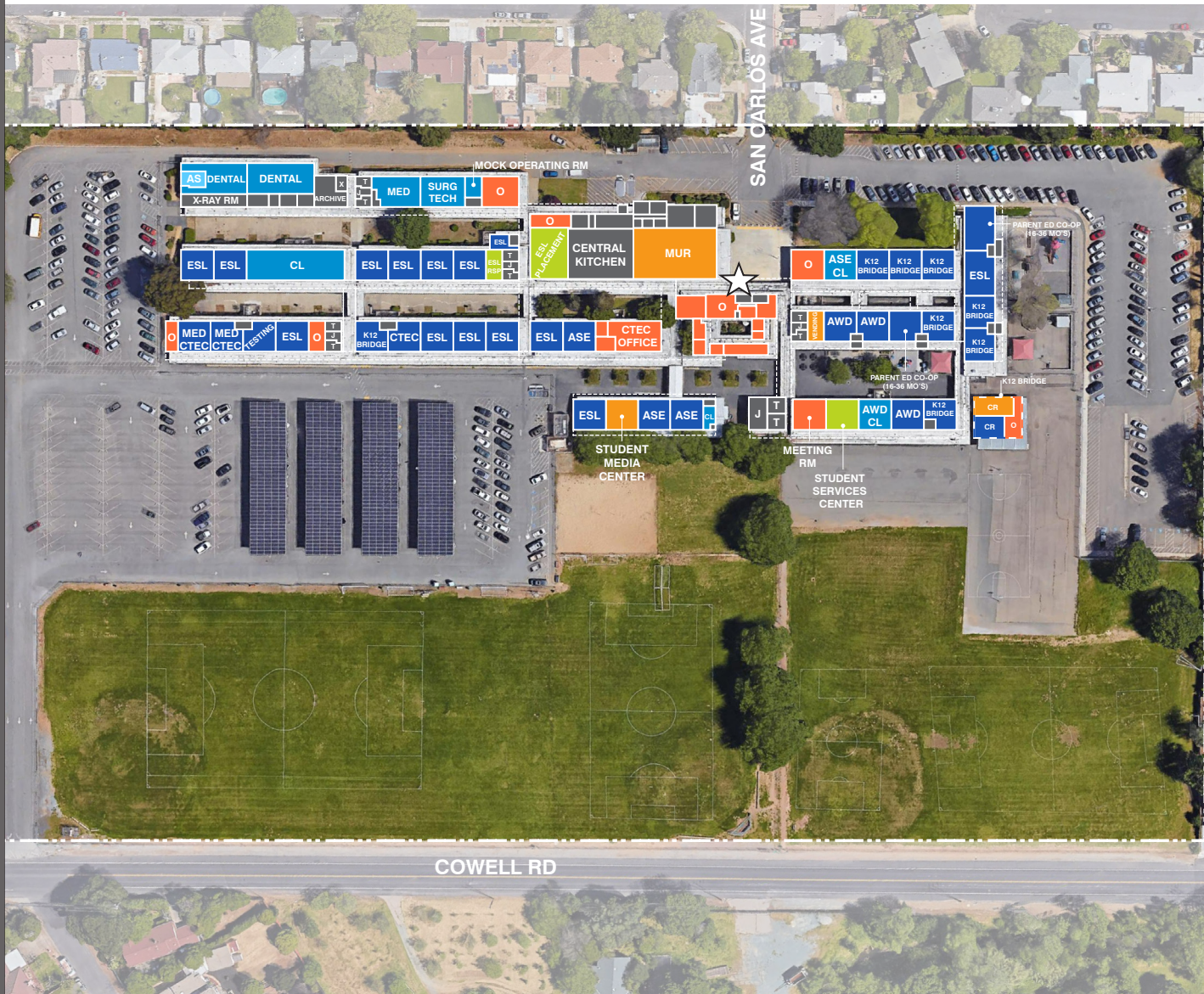
### Master Plan Cost Summary

Includes a description of the overall costs of proposed facilities improvements as a reflection of immediate needs and long-term visioning.

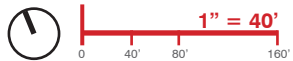
It should be noted that estimates are in 2019 dollars inclusive of both hard construction costs and project soft costs. Once an implementation schedule for a project has been determined, appropriate escalation to the proposed mid-point of construction should be budgeted.



# Mt. Diablo Unified School District Facilities Master Plan



- Classrooms, CR**
  - ASE - Adult Secondary Education
  - AWD - Adults with Disabilities
  - CR - Classroom
  - CTEC - Career Technical Education
  - ESL - English as a Second Language
  - TC - Testing Center
- Electives / Labs**
  - CL - Computer Lab
  - MED - Medical
  - SURG TECH - Surgical Technician
- Other Classrooms**
  - AS - After School
- Student Services**
  - RSP - Resource Specialist
- Shared Spaces**
  - CR - Community Room
- Admin / Faculty**
  - O - Office
- Support Spaces**
  - X - Storage
  - T - Toilets
  - U - Utility
  - J - Janitor
  - K - Kitchen
- Portable Classrooms**
- Main Entry**
- Drop-Off**

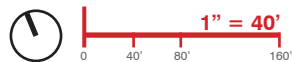




# Mt. Diablo Unified School District Facilities Master Plan



- Classrooms, CR**
  - ASE - Adult Secondary Education
  - AWD - Adults with Disabilities
  - CR - Classroom
  - CTEC - Career Technical Education
  - ESL - English as a Second Language
  - TC - Testing Center
- Electives / Labs**
  - CL - Computer Lab
  - CUL - Culinary Arts
  - MED - Medical
  - SURG TECH - Surgical Technician
- Other Classrooms**
  - AS - After School
- Student Services**
  - RSP - Resource Specialist
- Shared Spaces**
  - CR - Community Room
  - MC - Media Center
  - SU - Student Union
- Admin / Faculty**
  - O - Office
- Support Spaces**
  - X - Storage
  - T - Toilets
  - U - Utility
  - J - Janitor
  - K - Kitchen
- Drop-Off**
- Shade Structure**
- Portable Classrooms**
- Entry Plaza**
- Main Entry**
- Outdoor Learning / Playfields**



- NO WORK**
- MODERNIZATION**
- RECONFIGURE**
- NEW CONSTRUCTION**



## Mt. Diablo Unified School District Facilities Master Plan

### SCOPE OF WORK CATEGORIES

- 00. Modernization, Repair, and Site Utilities
- 01. Reconfigure Existing Classrooms
- 02. Classrooms New Construction
- 03. Science, Arts, CTE, and Electives Programs
- 04. Performing Arts
- 05. MUR, Student Union, and Food Service
- 06. Physical Education Facilities
- 07. Administration and Staff Support
- 08. Media Center and Student Support Spaces
- 09. New and Reconfigured Restrooms
- 10. Safety and Security
- 11. Parking, Drop-Off, and Entry Plaza
- 12. Outdoor Learning Environments and Quads
- 13. Exterior Play Spaces, Playfields, and Hardcourts
- 14. Next Generation Classroom Flexibility
- 15. Classroom Technology and Infrastructure

### MASTER PLAN COST (2019\$)

\$	16,633,000
\$	399,000
\$	-
\$	2,240,000
\$	-
\$	1,555,000
\$	-
\$	-
\$	-
\$	67,000
\$	91,000
\$	1,249,000
\$	163,000
\$	-
\$	1,501,000
\$	721,000

### Total Construction / Project Cost (2019\$)

\$ 24,619,000

#### The following items are excluded from this budget:

- Utility hook-up fees & City connection fees
- Off-site work and traffic signals
- Land acquisition costs
- Temporary classrooms
- Hazardous material surveys, abatement and disposal
- Escalation (costs are in 2019\$)

#### Costs reflected herein include a combination of immediate needs and long-term visioning:

- Repair and maintenance costs identified in the Facility Needs Assessments (immediate needs)
- Campus improvements to align with the district's vision as developed through extensive stakeholder engagement and the Educational Specifications (long-term visioning)